

EURO COSMETICS

Formulation Guide 2023/24



Ectoin® natural and
Glycoin® natural
www.bitop.de

Regenerating Eye area day cream
www.crodapersonalcare.com/en-gb

Kuraray Poval™ LV
Peel off mask
www.kuraray.com

Natura-Tec Plantsil™-Range
www.thencd.eu eu

Omyadent® and
Omyacare®
www.omya.com

Coco Body Cream
www.surfachem.com

LE SORBET
www.summiteurope.com

SUPPLIER'S PANORAMA

We invite you to visit these suppliers on their website for more information

BALLERSTAEDT
SEALING SYSTEMS

www.ballerstaedt.de

CLARIANT

www.clariant.com

Cosphatec

www.cosphatec.de

 **FLAVEX**
since 1986
Naturextrakte

www.flavex.com


MAWI
Chemiedistribution OHG

www.mawi-chemie.de

 **Organica Aromatics™**
Smell is what we sell

www.organicaaroma.com

pamasol
Swiss Aerosol Solutions

www.pamasol.com

PTG
Dienstleistungsgruppe
Abfüllen & Verpacken in Perfektion

www.ptg-lohnabfuellung.de

 **SABINSA**
since 1988
Cosmetics - Paints - Resins

www.sabinsaurope.com

L.A. SCHMITT
Kosmetik seit 1925

www.schmitt-cosmetics.com

Sili
SIGMUND LINDNER

www.sili.eu

Surfachem

www.surfachem.de

 **SystemKosmetik**

www.systemkosmetik.de

 **VÖGELE**
INGREDIENTS

www.voegele-lauffen.de

To advertise here contact
claudia.oderwald@eurocosmetics.de

EURO COSMETICS

FORMULATION GUIDE 2023/24 • Vol. No. 4 • B 50962

2 SUPPLIER'S PANORAMA

4 EDITORIAL IMPRINT

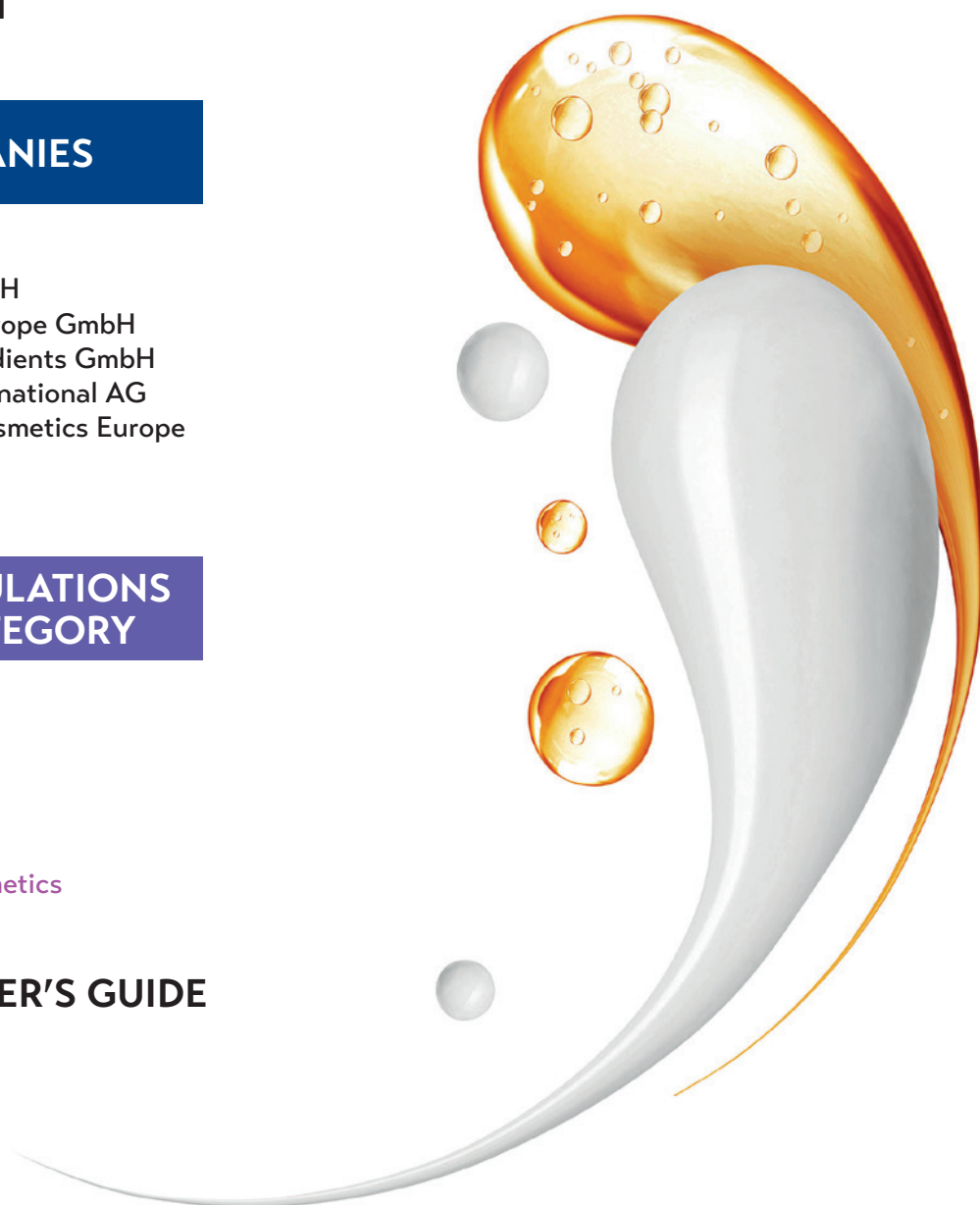
5 COMPANIES

- 6 bitop AG
- 8 Croda GmbH
- 10 Kuraray Europe GmbH
- 12 NCD Ingredients GmbH
- 14 Omya International AG
- 16 Summit Cosmetics Europe
- 18 Surfachem

20 FORMULATIONS BY CATEGORY

- 22 Skin Care
- 34 Body Care
- 35 Hair Care
- 38 Sun Care
- 41 Oral Care
- 43 Color Cosmetics

45 SUPPLIER'S GUIDE



Connect with us





Dear Readers,

Welcome! to our Formulation Guide 2023, which is published once a year and contains innovative formulations of leading personal care ingredient suppliers. Our Formulation Guide will be distributed at key personal care industry events for 12 months and is also available online on our website.

If you would like to find out more about the participating companies, simply click on the company logo.

Our Formulation Guide also offers formulators a selection of the latest trend-inspired formulation concepts for Skin-, Hair-, Body-, Sun-, and Oral Care as well as Color Cosmetics.

Be inspired and enjoy reading!

Your publisher

Michael Melcher

Organ:

GD – Gesellschaft für Dermopharmazie (e.V.)

Publisher:

Michael Melcher
michael.melcher@eurocosmetics.de

Editorial Board:

LM.-Chem. Peter Bernhardt,
Dr. Rudolf Bimczok,
Prof. Dr. Gerhard Buchbauer,
Dr. Franz Frosch,
Prof. Dr. Müller-Goymann,
Dr. Karl-Heinz Schrader,
Dr. Kuno Schweikert,
Prof. Dr. Gerhard Sontag,
Dr. Klaus Stanzl,
Prof. Dr. Helmut Viernstein

Editor-in-Chief:

Meyer R. Rosen
President and Founder of Interactive Consulting, Inc.
E-mail: meyer.rosen@chemicalconsult.com

Senior Editor/Promotion:

Ernst Jakobi
Phone: +49 (0) 89 - 36 03 74 26
Fax: +49 (0) 89 - 32 66 75 53
E-mail: info@eurocosmetics.de

Editor South East Asia/China:

Albert K.P. Leung
Executive, Hong Kong Cosmetic Technical
Resources Centre
E-mail: albertleung@hkctr.com

Editor of Column on Austria:

Univ.-Prof. Mag. pharm. Dr. Gerhard Buchbauer
Althanstr. 14, A-1090 Wien
Phone: +43-1-4277 55550
Fax: +43-1-4277 9555

Marketing Director:

Claudia Oderwald
Phone: +49 (0) 89 - 36 03 74 27
Fax: +49 (0) 89 - 32 66 75 53
E-mail: claudia.oderwald@eurocosmetics.de

Production:

Thomas Velte
E-mail: thomas.velte@t-online.de

Publishing Company:

INTER-EURO MEDIEN GmbH
P. O. Box 440255
D-80751 München
Phone: +49 (0) 89 - 36 03 74 27
Fax: +49 (0) 89 - 32 66 75 53
Email: info@eurocosmetics.de
Website: www.eurocosmetics-magazine.com

China Office:

Room 2006, MomaTowers Chaoyang
North Street No.199
Chaoyang District, Beijing(100026)
Phone:+86-10-68091928
Fax:+86-10-68091910
email: china@eurocosmetics-magazine.com

Managing Director:

Michael Melcher

Publication Mode:

Ten issues per year, two special issues.
Subscription charge: Germany EURO 165,- per annum (incl. forwarding charges); Europe EURO 185,- per annum (incl. forwarding charges); Overseas EURO 310,- per annum (incl. forwarding charges). One issue: EURO 15,- (excl. forwarding charges).
A new subscription can be cancelled in writing to the INTER-EURO MEDIEN GmbH, P. O. Box 440255, D-80751 München within 7 days following the subscription (date as postmark). If the subscription is not cancelled in writing two months by the end of the year, it is renewed for one year according to the current regulations.
No responsibility is accepted for unsolicited manuscripts, pictures and graphics. The responsibility for articles signed by name falls on the author. Despite careful checking, the editorial staff and the publishers accept no responsibility for the exactness of the articles.

© INTER-EURO MEDIEN GmbH
MÜNCHEN/GERMANY

EURO COSMETICS

Keeping you connected to your target audience

- Print & Digital Editions
- Website Marketing
- Newsletters
- Email Campaigns
- Videos
- Exclusive Online Content
- Online Company Profile



AZ

PROFILE

COMPANIES



bitop is a German manufacturer and expert in the biotechnological production and development of natural stress-protection molecules, the so called Extremolytes. In nature, these molecules protect extremophilic plants and microorganisms from their hostile environments, such as deserts, salt lakes, hot springs, or the arctic ice. Extremolytes are used as multifunctional, highly effective active ingredients in cosmetics and in human and animal health products.

bitop was founded in 1993 as a spin-off from the Faculty of Bioscience at the University of Witten/Herdecke. Today, we are the world-leading manufacturer of Ectoin® natural for the use in cosmetics and medical devices.

KEY PERSONNEL

Eva Galik – Chief Executive Officer

Wolfgang Hansen – Chief Digitalization Officers

Disha Patel – Senior Technical Sales & Marketing Manager

René Schmitz – Technical Sales & Marketing Manager

Imaddine El Ghrissi – Head of Biotechnological Production

bitop's active ingredients are manufactured by a patented, sustainable, state of the art biotechnological process at our production plant in Germany. Our manufacturing meets DIN EN ISO 13485, ensuring high-quality products for our worldwide customers.

bitop AG

Carlo-Schmid-Allee 5, 44263 Dortmund, Germany

 <https://www.bitop.de/en>

 <https://www.linkedin.com/company/bitop-ag/>

Contact

Disha Patel, disha.patel@bitop.de

 +49 151 67844346

Ectoin[®] natural

ULTIMATE PROTECTION & REPAIR

global anti-pollution
blue light protection
skin repair
anti-inflammatory
anti-aging
whitening
microbiome support

Clinically proven efficacy.

SUPERIOR
QUALITY
AND PURITY.

THE ORIGINAL:
MADE BY BITOP.

MADE IN
GERMANY



COSMOS
APPROVED



bitop

The Ectoin[®] company

www.bitop.de



We are a global speciality ingredient supplier to the beauty and personal care industry, dedicated to meeting evolving consumer needs, along with driving forward our commitment to sustainability and social responsibility. The name behind the effects that improve the quality of our everyday lives!

Founded in 1925, from the beginning we have understood the growing part that science plays in everyday life. We continually build on our heritage with sustainability central to our thinking, turning exciting, often ground-breaking ideas into practical solutions that our customers use to enhance products.

Always a step ahead when it comes to Personal Care innovation, Croda is recognised for creative solutions and ingredients to meet the demands of today's consumers and the future trends in the cosmetics and beauty market.

Our brands, Alban Muller, Croda, Crodarom, Iberchem, Parfex and Sederma, continuously invest in research and development with a constant focus on the changes that are happening in consumer routines and behaviours to remain market relevant. With Croda's broad offering of heritage and innovative ingredients such as emulsifiers, emollients, mineral UV filters, conditioning agents and more; to actives, fine chemistry and vegetal extraction from Sederma, and the exclusive and specialised range of botanical extracts from Crodarom; these synergistically combine to deliver to all your product needs and the wishes of your customers. We also have fragrance expertise with the combination of Iberchem and Parfex who are market leaders in fragrances for personal care applications.

Not only do we have a portfolio of innovative and efficacious ingredients, but we also pride ourselves on the claims and capabilities support we offer to our customers. When you buy with Croda, you get more than just ingredients, you join into a partnership where we provide formulation expertise, claim substantiation support, regulatory support, and marketing insights for a personal customer service.

All of the above result in our purpose: Smart science to improve lives™.

Croda GmbH

Herrenpfad-Süd 33, 41334 Nettetal, Germany

 <https://www.crodapersonalcare.com/en-gb>

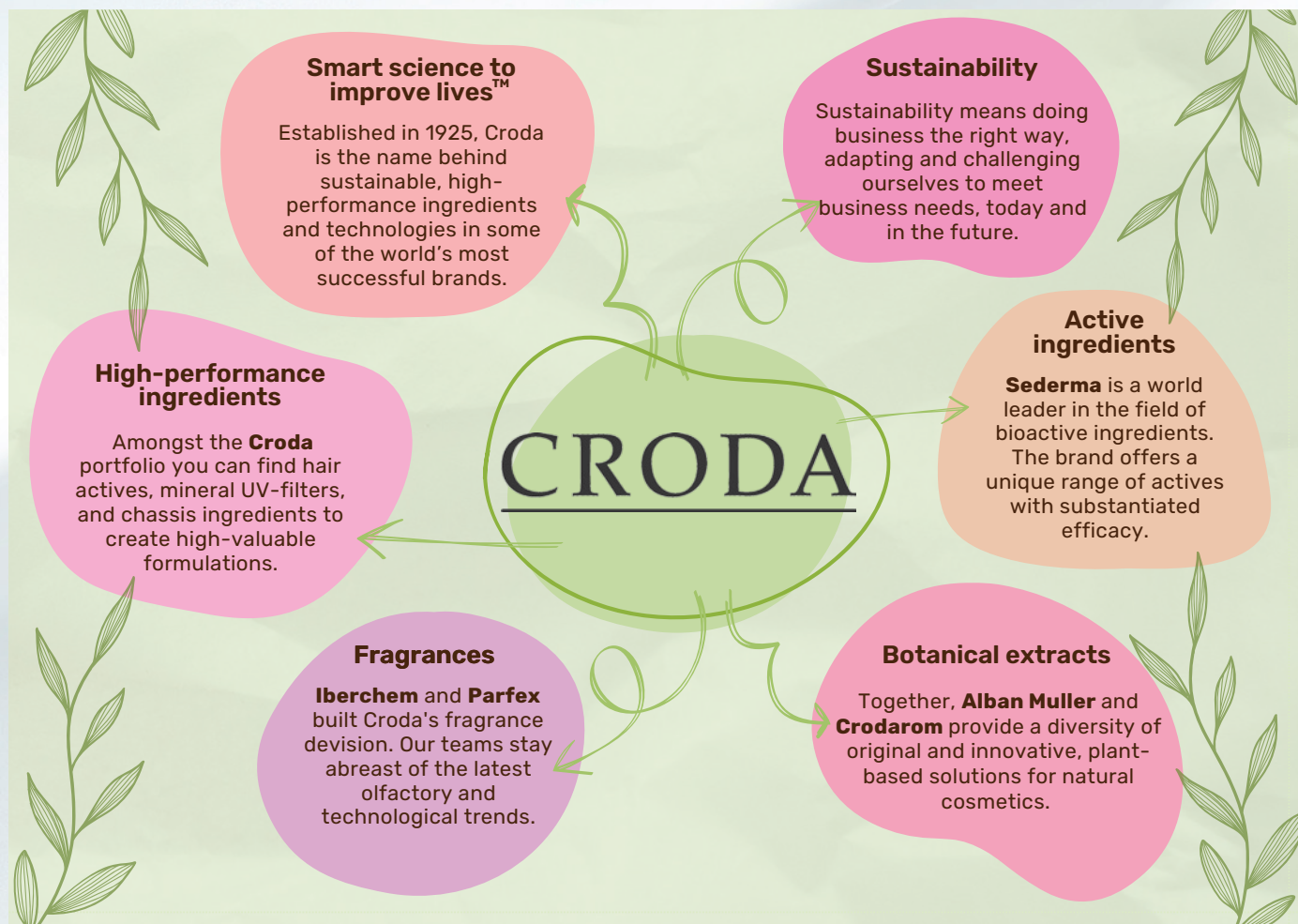
 <https://www.linkedin.com/showcase/croda-personal-care/>

 https://www.instagram.com/croda_personal_care

Contact

Angelina Gossen, angelina.gossen@croda.com

 +49 2157 91730



LEARN MORE ABOUT CRODA:

<https://www.crodapersonalcare.com/en-gb>

The Kuraray logo consists of a green semi-circle at the top, a white circle in the middle containing the word "kuraray" in blue lowercase letters, and a dark blue semi-circle at the bottom.**Kuraray Poval™**

Established in 1926, Kuraray is a world leader in specialty chemicals and functional materials. We transform materials for the future and for the ever-changing world. With more than 11,700 employees worldwide, Kuraray is committed to entering new fields of business through the use of pioneering technologies that help to protect the environment and improve the quality of life.

Kuraray Poval™ is the trademark for polyvinyl alcohol made by Kuraray. Our polymers are water-soluble, have high pigment binding capacity, protective colloid characteristics and thickening effects. Kuraray produces its wide range of Kuraray Poval™ grades in Japan, Singapore, Germany and the USA. Kuraray's global production and service network make us your partner of choice for innovative high-quality PVOH resins.

Kuraray Poval™ LV grades are specially developed for the cosmetics industry and are used for skin and hair care, color cosmetics, peel off masks, mascara, sunscreen, shampoos and etc. Thanks to particularly ultra-low methanol (MeOH) residual, Kuraray Poval™ LV grades are particularly environmentally friendly and safe to use.

Polyvinyl alcohol is a nonionic water-soluble polymer that is well suited for water based cosmetic and personal care products. Polyvinyl alcohol is a linear and semi-crystalline polymer that is also inherently biodegradable in aqueous solution form.

Why use Kuraray Poval™ LV in cosmetics?

- Viscosity index improver with strong hydrophilic film forming properties
 - Good binder, adhesion promoter, lubricant, emulsifier and encapsulation
 - Strong product stewardship and regulatory information well documented
- Excellent option for transparent peel-off masks.

Kuraray Poval™ LV is recognized as one of the very few vinyl polymers which is water soluble and inherently biodegradable in water in the presence of suitably acclimated micro-organisms (test method ISO 14851).

Kuraray Europe GmbH

Philipp-Reis-Straße 4, 65795 Hattersheim am Main, Germany

 <https://www.kuraray-poval.com/>

 <https://www.linkedin.com/company/kuraray-europe-gmbh/>

Contact

Juliana Takimoto, Juliana.Takimoto@kuraray.com

 +49 69 305 84968

A close-up photograph of a woman with light blue eyes and blonde hair, applying a clear, translucent peel-off mask to her cheek. Her hand is visible, holding the edge of the mask. The background is a soft, out-of-focus light blue. Several large, semi-transparent orange circles are overlaid on the image, adding a modern, graphic design element.

Kuraray Poval™ — Biodegradable LV-Grades for Personal Care Applications

kuraray

Kuraray Poval™



NCD Ingredients, celebrating this year its 10th anniversary, is your trusted sales specialist for raw materials and active ingredients of global established quality manufacturers in the field of the detergents, cosmetics, industrial applications and nutritions.

The approved NCD competence team of experienced merchants, chemists and doctors provides you individual and competent advice.

As renowned connector between customers and suppliers all over the world we actively operate for you in our core markets Germany, Switzerland and Austria – but also across the borders.



NCD Ingredients GmbH

Ruhrstraße 15, 63452 Hanau, Germany

🌐 <https://www.thencd.eu>

in <https://de.linkedin.com/company/ncd-ingredients-gmbh>

Contact

Anna Reußwig, a.reusswig@thencd.eu

☎ +49 6181 30475-15



NATURA-TEC

Olive Squalane & Olive Squalene

- 100% upcycled
- Nature positive and carbon negative
- Vegan, Non-GMO & natural derived
- Locally produced (Spain, Italy and Greece) in a circular economy strategy
- Positive oxygen production
- Olive trees are neither irrigated nor fertilized
- No deforestation and negative impacts on local health nor wildlife

NCD Ingredients GmbH
Ruhrstr. 15
63452 Hanau - Germany
Fon: +49 (0) 6181 30475-0
cosmetics@thencd.eu

www.thencd.eu



LEARN MORE ABOUT NCD:

<https://www.thencd.eu>



Future-proof ingredients at one with nature

With over 130 years of expertise, the Swiss company Omya produces natural minerals in accordance with the most stringent sustainability, quality and regulatory standards. For the creation of all-round solutions serving current consumer demand, Omya offers a broad distribution portfolio including natural ingredients for all kinds of personal care applications.

The tailor-made minerals are processed with a unique and patented technology. The very fine particles are sourced from the company's own quarries, provide excellent stability and promise a low carbon footprint. The ingredients have been comprehensively tested and proven safe, with many of them COSMOS and NATRUE certified. Their high purity and controlled low microbiology reduce the risk of undesired interactions between trace elements and active ingredients to a minimum, thus extending shelf-life. Particles have exceptionally low levels of aluminium, manganese and cadmium, and are also vegan, Halal and Kosher.

Looking to the future, Omya is continuing to research innovative new anhydrous applications. These formulations for skin, oral and hair care, as well as make-up, not only reduce water use during production but also packaging and transportation costs, resulting in a lower CO₂ footprint. The functional particles enable easy manufacturing while being highly efficacious without the need for harsh preservatives. Branded as Omyaskin® and Omyadent®, the particles form the basis of tooth tabs and toothpowders for remineralisation and desensitization, bar applications such as shampoos and scrubs, detox waterless face masks and solid make-up removers.

Another breakthrough delivery format for cosmetic actives is Cosmospheres® natural cellulosic beads which are gentle on the environment and free from microplastics, preservatives and solvents. When filled with liquid or powdered agents, Cosmospheres® swell to form a cell-like structure. This prevents the loaded content from seeping into the rest of the formula. When water is added, the beads become soft and spreadable, and release their active content smoothly and efficiently. No residues are left, making for ease of application with added sensory appeal. The aesthetically pleasing beads are perfect for hair, face, body and oral care applications, as well as hygiene products.

Omya International AG

Baslerstrasse 42, CH-4665 Oftringen, Switzerland

 <http://www.personalcare.omya.com/>

 <https://www.linkedin.com/company/omya/>

Contact

<mailto:info.cosmetics@omya.com>

 +41 62 789 2929

Omya Consumer Goods
omya.com

let
nature
take
care

clean
beauty
waterless
formulations



THINKING OF TOMORROW

SUMMIT
COSMETICS

Following the acquisition in 2022 of the Personal Care division of Summit Pharmaceuticals Europe (SPE) in Germany by SACI-CFPA, a major player in the distribution of ingredients for the cosmetics industry for decades, Summit Cosmetics Europe was created in April 2023 to harmonize the activities of the Sumitomo Corporation's cosmetics division in Europe.

Through a global supplier network, process innovation and operational excellence, Summit Cosmetics Europe deliver value to their customers. With the unique ability to validate and demonstrate ingredient benefits, Summit Cosmetics Europe combines global sourcing of materials, local knowledge, and technical expertise to position their customers as leaders in a highly competitive global market.

Global Reach with Local Expertise:

Their global footprint means they are able to source and deliver ingredients from all corners of the world, with quality logistics service. Locally, they are experts in the unique regulatory requirements within the regions they operate. We have the flexibility and resources available to meet your needs.

Innovation and quality as fundamentals:

Their R&D, Marketing & Regulatory departments focus on originality, innovation, and safety with a constant eye on trends, whether they are macro or applicable to niche markets. The application laboratories work closely with their customers to provide the most appropriate solutions to their needs and those of consumers.

Future Focused:

Backed by the Sumitomo Corporation Group, rooted in hundreds of years of business tradition and integrity, they are building a highly natural portfolio of the best green cosmetic ingredients available.

Summit Cosmetics Europe – German Branch

Schwannstraße 10, 40476 Düsseldorf, Germany



<https://summitcosmetics-europe.com>



<https://linkedin.com/company/summitcosmetics-europe/>

Contact

contact-germany@summitcosmetics-europe.com

☎ +49 211 4570 511



SUMMIT
COSMETICS

European Distributor
of Cosmetic Ingredients

Sourcing of **Pioneering Technologies**
Natural Ingredients
Green Alternatives

Innovative formulation to meet all needs
Creation of new textures
Technical & Regulatory support



**Summit Cosmetics Europe
German Branch**

Schwannstr. 10, 40476 Düsseldorf, Germany
contact-germany@summitcosmetics-europe.com
+49 (0)211 4570 511 ▪ summitcosmetics-europe.com

Join us at
SEPAWA® CONGRESS
Booth E736-737



LEARN MORE ABOUT
SUMMIT COSMETICS EUROPE:

<https://summitcosmetics-europe.com>



Since our creation in 1981, Surfachem, a 2M Group Company, has developed into a leading distributor of surfactants and speciality chemicals.

Across a range of market sectors, we supply a broad range of speciality ingredients for industry leading manufacturers including Shell, Stepan, Lubrizol, Evonik, Solvay and Jungbunzlauer.

Our approach is to act as a synergistic link between our suppliers and customers to deliver chemistry for a better life™.

With customers in over 65 countries and teams in Benelux, Brazil, France, Germany, Italy, Nordics, Poland and Spain, wherever our customers are in the world, Surfachem offers a tailored service to meet their needs.

Whether you are looking for that next great idea, seeking help with regulatory issues or looking to improve your product performance, Surfachem can help. Every day we support hundreds of customers by providing a global ingredient portfolio, exceptional technical knowledge and logistical expertise.

From established companies to start-ups and brands, no matter who you are or where you are based, we are here to help develop your next generation of products.

Surfachem

2 The Embankment, Sovereign Street, Leeds, West Yorkshire,
United Kingdom LS1 4BA2

 <https://surfachem.com/>

 <https://www.linkedin.com/company/surfachem/>

 <https://www.instagram.com/surfachem/>

Contact

James Hodgkinson, jhodgkinson@surfachem.com

 +44 113 394 9200

Delivering chemistry for a better life™

Ingredients trend leader

- >Home, Industrial & Institutional Care
- >Personal Care & Cosmetics
- >Pharmaceuticals

www.surfachem.com | info@surfachem.com

Surfachem



LEARN MORE ABOUT SURFACHEM:

<https://surfachem.com/>

SKIN CARE

- 22 bitop AG – Anti-aging Barrier Protect & Repair Cream
- 23 bitop AG – InstaHydrate Power Drops
- 23 bitop AG – Waterless Luxe Face Elixir
- 24 bitop AG – Skin Shield Hydra-Boost Toner
- 25 Croda GmbH – Regenerating Eye Area Day Cream
- 26 Kuraray Europe GmbH – Kuraray Poval™ LV
- 27 NCD Ingredients GmbH – 50+ Reveal Beauty Night Care
- 28 NCD Ingredients GmbH – Beauty Cleansing Balm
- 29 Omya International AG – Detox Waterless Face Mask for a hydrated skin
- 30 Summit Cosmetics Europe – Moisturizing Pearl Bi-Serum
- 31 Summit Cosmetics Europe – Le Sorbet
- 32 Summit Cosmetics Europe – Sulfur Foaming Cleanser
- 33 Surfachem – Transforming Face Scrub

BODY CARE

- 34 Surfachem – Coco Body Cream

HAIR CARE

- 35 Croda GmbH – Refreshing Fruit Smoothie Natural Hair Conditioner
- 36 NCD Ingredients GmbH – Hair Growth Re-Balancing Gel
- 37 Surfachem – Pink Curly Hair Jelly

SUN CARE

- 38 Croda GmbH – Daily Protection Mineral Sunscreen Spf 40 With 1/3 Uva
- 40 Summit Cosmetics Europe – Sun Oil

ORAL CARE

- 41 Omya International AG – Toothpaste
- 42 Omya International AG – Toothtabs

COLOR COSMETICS

- 43 NCD Ingredients GmbH – DIY Super Glowing Eye Shadow
- 44 NCD Ingredients GmbH – Divine and Natural Mud for Lip & Cheek
- 45 Summit Cosmetics Europe – Alpin Moisturizing Eye Patches

FORMULATIONS

SKIN CARE
22

BODY CARE
34

HAIR CARE
35

SUN CARE
38

ORAL CARE
41

COLOR COSMETICS
43

Anti-aging Barrier Protect & Repair Cream

with Ectoin® natural and Glycoin® natural



OVERVIEW

Provides skin barrier protection with long-term hydration and anti-aging benefits

Phase	Product	INCI	% w/w
A	Deionized Water	Aqua (Water)	add 100
	1,2-Propyleneglycol ²	Propylene Glycol	3.00
	CORN PO4 PH "B" ³	Distarch Phosphate	3.00
B	Tegin® M Pellets ⁴	Glyceryl Stearate	3.00
	Tego® Care 450 ⁴	Polyglyceryl-3 Methylglucose Distearate	1.50
	Tego® Alkanol 1618 ⁴	Cetearyl Alcohol	1.00
	Myritol® 318 ²	Caprylic/Capric Triglyceride	7.00
	Squalane ⁶	Squalane	2.00
	Softisan 100® ⁵	Hydrogenated Coco-Glycerides	3.00
	Cetiol® SB 45 ²	Butyrospermum Parkii (Shea) Butter	1.00
	Seatons Coconut Oil ⁷	Cocos Nucifera (Coconut) Oil	2.00
	Cetiol® Ultimate ²	Undecane, Tridecane	1.00
	Dermofeel® Toco 70 non-GMO ⁴	Tocopherol, Helianthus Annuus (Sunflower) Seed Oil	0.30
C	Deionized Water	Aqua (Water)	5.00
	Ectoin® natural ¹	Ectoin	2.00
	Glycoin® natural ¹	Glyceryl Glucoside, Aqua(Water)	1.00
D	Dermosoft® Pentiol eco ⁴	Pentylene Glycol	5.00
	Citric Acid (50% solution) ⁸	Citric Acid	q.s.
Suppliers: 1 bitop AG, 2 BASF, 3 ARGANA Starch, 4 Evonik, 5 IOI, 6 Henry Lamotte Oils, 7 Croda, 8 Several			



PROCESS

1. Heat phase A to 80 °C while stirring.
2. Stir for 15 min at temperature. Heat phase B separately to 80 °C.
3. Add phase B to phase A while stirring. Cool down to < 40 °C and add phase C.
4. Homogenize for 3 min. Add Dermosoft Pentiol eco and adjust the pH to 5.5 with citric acid.
5. Stop stirring at 30 °C.

The information presented herein is believed to be accurate and reliable, but no warranty or guarantee, expressed or implied, is made regarding the information or the performance of any product. Further, nothing contained herein shall be taken as any inducement or recommendation to use, manufacture or sell that may infringe any patents or any other proprietary rights now or hereafter in existence, nor to imply compliance with any regulatory requirements.

InstaHydrate Power Drops with Glycoin® natural



OVERVIEW

Powerful elixir providing instant skin hydration, brightening and anti-aging efficacy

Phase	Product	INCI	% w/w
A	Deionized Water	Aqua (Water)	89,20
	Phyteq Raspberry N ¹	Raspberry Ketone	0,50
	Hydrolite® 5 green ²	Pentylene Glycol (100%)	3,00
	Glycoin® natural ³	Glyceryl Glucoside, Aqua (Water)	2,00
	Ketrol CG SFT ⁴	Xanthan Gum (100%)	0,30
	Rosewater EC ⁵	Rosa Damascena Flower Water	5,00

Suppliers: 1 Ashland/Barentz, 2 Symrise GmbH & Co.KG, 3 bitop AG, 4 CP Kelco/Rahn GmbH, 5 Croda



PROCESS

1. Heat the water to 80°C and add the Phyteq Raspberry N.
2. When it is completely dissolved, the solution can be cooled down again.
3. When the temperature of 40°C is reached, wet the Ketrol CG SFT with the Hydrolite 5 and add it.
4. Then add the Glycoin®natural and rosewater and stir for another 15 min.

Waterless Luxe Face Elixir with ECTOinOIL®

OVERVIEW

Deeply nourishes your skin and provides anti-aging benefits

Phase	Product	INCI	% w/w
A	Imwitor 375 ²	Glyceryl Citrate/Lactate/Linoleate/Oleate	5.00
	Squalan ³	Squalan	68.50
	YanguOil ³	Calodendrum Capense Nut Oil	10.00
	Argan Oil ³	Argania Spinosa Kernel Oil	8.00
	Vegetlight Silk ⁴	Coconut Alkanes, Coco-Caprylate/Caprate	3.00
	Tocopherol ³	Tocopherol	0.50
B	ECTOinOIL® ¹	Aqua, Caprylyl/Capryl Glucoside, Propanediol, Ectoin	5.00

Suppliers: 1 bitop AG, 2 IOI, 3 Several, 4 Grant Industries, Inc.



PROCESS

1. Mix phase A at room temperature until homogenous.
2. Add ECTOinOIL®, the transparency is created during stirring.

The information presented herein is believed to be accurate and reliable, but no warranty or guarantee, expressed or implied, is made regarding the information or the performance of any product. Further, nothing contained herein shall be taken as any inducement or recommendation to use, manufacture or sell that may infringe any patents or any other proprietary rights now or hereafter in existence, nor to imply compliance with any regulatory requirements.

Skin Shield Hydra-Boost Toner

with Ectoin® natural



OVERVIEW

Provides long-term skin hydration along with ultimate skin protection

Phase	Product	INCI	% w/w
A	Deionized Water	Aqua (Water)	61.90
	Ectoin® natural ¹	Ectoin	0.50
	Glycerin, 85% ²	Glycerin, Aqua (Water)	3.00
	Dermosoft® Pentiol eco ³	Pentylene Glycol	5.00
	Sodium Chloride ²	Sodium Chloride	0.30
B	Myritol® 312 ⁴	Caprylic/Capric Triglyceride	25.00
	Baobab Oil organic ⁵	Adansonia Digitata Seed Oil	0.50
	Seatons Refined Sweet Almond Oil ⁶	Prunus Amygdalus Dulcis (Sweet Almond) Oil	0.50
	Dermofeel® Sensolv MB ³	Isoamyl Laurate	3.00
	Dermofeel® Toco 70 non-GMO ³	Tocopherol, Helianthus Annuus (Sunflower) Seed Oil	0.10
	D&C Green No. 6 (0,1%) ⁷	Green 6 (CI 61565), Caprylic/Capric Triglyceride	0.20
Suppliers: 1 bitop AG, 2 Several, 3 Evonik, 4 BASF, 5 Frutelia, 6 Croda, 7 Symrise			



PROCESS

1. Mix the ingredients of Phase A until homogenous.
2. In a separate vessel, mix the ingredients of Phase B until homogenous (prepare the dye solution separately).
3. Add Phase B to Phase A.

The information presented herein is believed to be accurate and reliable, but no warranty or guarantee, expressed or implied, is made regarding the information or the performance of any product. Further, nothing contained herein shall be taken as any inducement or recommendation to use, manufacture or sell that may infringe any patents or any other proprietary rights now or hereafter in existence, nor to imply compliance with any regulatory requirements.

Discover our Formulation Guide 2023/24

www.eurocosmetics-mag.com

REGENERATING EYE AREA DAY CREAM

Skin Care
SE089I

COLD
PROCESS



OVERVIEW

Upon application this cream firms and illuminates the eye contour area. **Ameyezing™** reinforces skin structure while **Feminage™** naturally fights against hormonal skin sagging. Both are eco-designed active ingredients. With its soothing and cell cohesion properties, **Phytessence™ Speedwell** contributes to restore the skin homeostasis to counter the effects of external aggressions and thus premature ageing. This "free-from" formula could be considered as "Green" as it features a natural origin content of 97.994% and a natural content of 74.656% according to the ISO 16128-1 and ISO 16128-2 standards and is in conformity with the Cosmos Natural standard. It also contributes to a sustainable planet as **Arlacel™ 1690** and **Span™ 80** allow cold processing to preserve energy. These surfactants also allow stabilisation in combination with the emollients, **Crodamol™ ISIS** and **Crodamol™ GTCC** which add moisturisation. **Solaveil™ XT-300** is used in this formulation to provide UVA and UVB protection with one single active product. In the long term, this day cream reinforces the barrier function and the epidermis for regenerated skin.

Phase	Ingredient/INCI Name	Function	% w/w
A	Water Deionised (Aqua)	-	To 100
	Sodium Chloride	Salt	1.00
	Phytessence™ Speedwell (Water (and) Glycerin (and) Veronica Officinalis Flower/Leaf/Stem Extract) ³	Soothing botanical extract	1.00
	Potassium Sorbate	Preservative	0.30
	Sodium Benzoate	Preservative	0.30
	Lactic Acid	pH adjustment	0.05
B	Feminage™ (Glycerin (and) Water (and) Engelhardtia Chrysolepis Leaf Extract) ²	Anti-hormonal skin sagging active	3.00
C	Ameyezing™ (Butylene Glycol (and) Zerumbone)	Eye contour active	1.50
D	Crodamol™ GTCC (Caprylic/Capric Triglyceride) ¹	Emollient	6.00
	Imercare® Pharma 00T (Talc) ⁴	Powder	6.00
	Solaveil™ XT-300 (Titanium Dioxide (and) Caprylic/Capric Triglyceride (and) Polyhydroxystearic Acid (and) Stearic Acid (and) Alumina) ¹	Sunscreen	5.00
	SP Arlacel™ 1690 MBAL (Sorbitan Isostearate (and) Polyglyceryl-3 Polyricinoleate) ¹	W/O emulsifier	3.00
	FSS Rice Stach Powder (Oryza Sativa (Rice) Starch) ⁵	Powder	3.00
	Squalane	Emollient	3.00
	Crodamol™ ISIS (Isostearyl Isostearate) ¹	Emollient	2.00
	Span™ 80 (Sorbitan Oleate) ¹	Co-emulsifier	1.00
	DI Alpha Tocopherol	Antioxidant	0.20
	Fragrance	Fragrance	0.20

Suppliers: **1 Croda**, **2 Sederma**, **3 Crodarom**, **4 Imerys**, **5 Active Concepts**

PROCESS



Weigh and mix Part A with helix stirring (s=300 rpm). Weigh Part B. Add Part B to Part A with normal helix stirring. Weigh Part C. Add Part C to Part A+B and mix well. Weigh Part D. Weigh Part D and mix well with normal rotor stator stirring. Add Part A+B+C to Part D with rapid rotor stator stirring and mix well.

PROPERTIES



Appearance: Off-white opaque viscous cream;
Viscosity: 50.000 cps ± 10% Sp.93, 2.5rpm, 1 min, 25°C,
Brookfield DV-I Prime.

Stability: 3 months at 4°C, 25°C, 45°C and 1 month at 50°C.
Centrifuge 10min @ 3000rpm and 1 x -80°C/+25°C 24 hours
freeze-thaw cycle and autoclave 20min @120°C.

Imercare® is a registered trademark of Imerys

This formulation was developed in France. Contact your local sales representative with enquiries as ingredient availability can vary by region.

Non-warranty The information in this publication is believed to be accurate and is given in good faith, but no representation or warranty as to its completeness or accuracy is made. Suggestions for uses or applications are only opinions. Users are responsible for determining the suitability of these products for their own particular purpose. No representation or warranty, expressed or implied, is made with respect to information or products including, without limitation, warranties of merchantability, fitness for a particular purpose, non-infringement of any third-party patent or other intellectual property rights including, without limit, copyright, trademark and designs. Any trademarks identified herein, unless otherwise noted, are trademarks of the Croda group of companies.

©2021 Croda International Plc

Kuraray Poval™ LV

Transparent mask

FR-0256H-19049

Metallic colored mask for good skin coverage

FR-02560-19091



OVERVIEW

Kuraray Poval™ LV-grades have been specially designed for cosmetic and personal care applications. Kuraray produces its wide range of Kuraray Poval™ grades in Japan, Singapore, Germany and the USA. Kuraray's global production and service network make us your partner of choice for innovative high-quality PVOH resins.

Both formulations give peel-off masks with even coverage, easy to apply, quick drying time and mechanical properties allowing the removal of the masks in one piece. They represent a good starting point for the formulation of commercial peel-off masks.

Phase	Ingredient (Trade name)	Ingredient (INCI name)	% w/w	
			FR-0256H-19049	FR-02560-19091
A	Water	Water	60.40	58.20
	Xanthan Gum FNPC	Xanthan Gum	–	0.20
	Glycerin	Glycerin	5.00	5.00
	Kuraray Poval™ 26-88 LV	Polyvinyl alcohol	2.00	2.00
	Kuraray Poval™ 49-88 LV	Polyvinyl alcohol	10.00	10.00
B	Water	Water	5.00	5.00
	Butylene Glycol	Butylene Glycol	2.00	2.00
	Polyglykol 1500 S	PEG-32	5.00	5.00
C	NEOFECT 304	Benzyl Alcohol, Caprylyl Glycol	0.60	0.60
D	Alcohol	Alcohol	10.00	10.00
E	BK Bright Fire Red DCS	Synthetic Fluorophlogopite, Iron Oxides, Dimethicone, Triethoxycaprylsilane	–	2.00

PROCESS

The Kuraray Poval™ LV-grades are produced under GMP conditions and have a specified Methanol (MeOH) content below 0,3% ex Germany and even below 0.1% ex Japan. Polyvinyl alcohol is a nonionic water soluble polymer that is well suited for water based cosmetic and personal care products. Polyvinyl alcohol is a linear and crystalline polymer that is also biodegradable under the right conditions.

PROPERTIES

Outstanding film-forming and high binding strength. Our polymers are water-soluble, highly reactive, crosslinkable and foamable. They have high pigment binding capacity, protective colloid characteristics and thickening effects.

FUNCTIONALITIES

- Film former
- Adhesion promotor
- Encapsulater
- Emulsifier
- Lubricant
- Viscosity controller

APPLICATIONS

- Skin care (peel off mask, etc.)
- Color cosmetics (mascara, brows, etc.)
- Sun care
- Hair care (hair colorant, shampoo, etc.)

50+ Reveal Beauty Night Care

Skin Care
2004B-RBNC



OVERVIEW

At night it's the best time to replenish the skin's density and fill in wrinkles. When you wake up, your skin is fully beaming. Rich in Natura-Tec Plantsil™, a precious sensorial ingredient based on olive oil, and in Natura-Tec Marine BlueRevelation 50+™, a powerful cocktail of microalgae, this beneficial anti-wrinkle sleeping mask works on all fronts to regenerate mature skin. Sleep becomes truly restorative. Upon awakening, the skin is smooth and wrinkles are filled.

With proven efficacy, Natura-Tec Marine BlueRevelation 50+™ provides an integrative approach to enhance mature skin beauty thanks to its remarkable anti ageing properties: moisturizing, firming, densifying, and smoothing 50+ skin.

Natural Origin Content ≥ 99% (incl. water, ISO 16128)

Phase	Ingredient	INCI	Function	% w/w
A	Deionized Water	Aqua (Water)	Solvent	69.90
	MgSO ₄ · 7H ₂ O ₂	Magnesium Sulfate	Stabilizer, salt	0.40
	Natura-Tec Glycerin – Organic	Glycerin	Humectant	2.00
B	Natura-Tec Ecomuls™ 2 in 1	Glyceryl Oleate (and) Polyglyceryl-3-Polyricinoleate (and) Olea Europaea (Olive) Oil Unsaponifiables	W/O natural and COSMOS emulsifier	4.00
	Natura-Tec White Beeswax	Cera Alba	Rheology modifier	2.00
	Natura-Tec Plantsil™	Hydrogenated Ethylhexyl Olivat (and) Hydrogenated Olive Oil Unsaponifiables	Natural & COSMOS emollient with a silicone skin feel	17.00
C	Natura-Tec Marine BlueRevelation 50+™	Triolein (and) Cyllindrotheca Fusiformis Extract (and) Nannochloropsis Oceanica Extract	50+ microalgae active for a global anti-ageing activity	1.50
	Natura-Tec Rice Starch	Oryza Sativa (Rice) Starch	Sensorial agent	2.00
	Natural Vitamine E	Tocopherol	Antioxidant	0.40
	Geogard ECT	Benzyl Alcohol (and) Salicylic Acid (and) Glycerin (and) Sorbic Acid	Preservative	0.80

PROCESS



Heat separately phase A and B to 70°C. Add slowly phase A to phase B whilst stirring at approx. 800 rpm and leave stirring for 5 minutes.

Homogenise during 2 min using Ultra-Turrax.

Cool whilst stirring moderately.

Add phase C below 40°C and let stir for 5 minutes. Then homogenise during 2 min using Ultra-Turrax. Allow to cool down whilst stirring moderately.

PROPERTIES



Appearance: Bright and smooth emulsion

Viscosity (21°C): 83 745 mPa.s (L3;0,5 rpm)

WAY OF USE



Place a small amount of product into your hand. Gently apply a thick layer on the face and allow it to gradually absorb through the skin during the night.

BEAUTY CLEANSING BALM

Skin Care
2303A-BCB



OVERVIEW

Innovate in your K-Beauty Routine!

Our cleansing balm is a creamy cleanser that removes makeup and dirt while protecting the skin moisture. It's great for all skin types, and especially for oily skin.

Our cleansing balm is very gentle for the skin thanks to our NaturaVelvet Olive. Get a small amount of product into your hand and massage it onto your skin, it gets kind of milky and pulls all of your makeup off of the surface of your skin. Our Plantsil will provide all the make up removing efficacy without any greasy after feel.

The Natura-Tec BBB will skin will leave your skin definitively smooth.

Phase	Ingredient	INCI	Function	% w/w
A	Naturavelvet Olive	Olea Europaea Fruit Oil (Peach) Kernel Oil (and) Hydrogenated vegetable Oil (and) Butyrospermum Parkii (Shea) Butter (and) Tocopherol	Replenishing, Moisturiser, Texturiser	46.00
	Natural BBB Beauty Balm Base	Hydrogenated Ethylhexyl Olivatate (and) Hydrogenated Castor Oil (and) Butyrospermum Parkii Butter (and) Tocopherol	Ultra light functional base Easy to use	28.50
	Natura-Tec Plantsil	Hydrogenated Ethylhexyl Olivatate (and) Hydrogenated Olive Oil Unsaponifiables	Cosmos silicone feel makeup removing agent	10.00
B	Lumol K 5229 (Zschimmer & Schwarz)	MIPA-Laureth Sulfate (and) Laureth-4 (and) Propylene Glycol	Water free Surfactant blend	15.00
C	Natural Vitamine E	Tocopherol	Antioxidant	0.50

PROCESS



Prepare phase A and melt at 80°C.

Once phase A is melted, add phase B and let cool down under slow agitation.

Add phase C below 50 °C. Fill in a jar at 45°C.

PROPERTIES



Appearance: Off-white Paste

WAY OF USE



Get a small amount of product into your hand and massage it into your skin. Then you gently wipe it off with a damp warm cloth and your skin is left clean, soft, and smooth!

Detox Waterless Face Mask for a hydrated skin

Skin Care

Omyacare® S95-OG



OVERVIEW

Activated Charcoal to detoxify the skin

Phase	Product	INCI	% w/w
A	Omyacare® S95-OG ¹	Calcium Carbonate	50.00
	Vivastar® Glucose ²	Glucose	34.00
	Vivastar® CS 002 Alginate ²	Algin	5.00
	Vivastar® CS 302 SV ²	Sodium Carboxymethyl Starch	5.00
	Vivastar® CS Instant Powder ²	Sodium Carboxymethyl Starch	1.00
	Tetrasodium Pyrophosphate ³	Tetrasodium Pyrophosphate	1.00
	Activated Charcoal ⁴	Charcoal Powder	1.00
	Aloe Vera	Aloe Barbadensis Leaf Water	1.00
	Perfume	Fragrance (Parfum)	q.s.
			100.00
Suppliers: 1 Omya International AG, Switzerland , 2 JRS – J. Rettenmaier & Söhne GmbH, Germany , 3 Adetis, France , 4 Omya Clariana S.L.U., Spain			

PROCESS

Mix phase A.



PROPERTIES

Physical Data: pH –

Viscosity: - mPas Brookfield DV-II (RT; RV 6, 30s/10 rpm)

Stability tested:

3 months: 5°C, room temperature, 40°C

12 months: room temperature



WAY OF USE

- 1 Mix 1/3 powder with 2/3 water
- 2 Apply it on the skin
- 3 Keep it for 10 minutes
- 4 Remove it with water



Omya has taken every possible care to ensure that the information herein is correct in all aspects. However, Omya cannot be held responsible for any errors or omissions which may be found herein, nor will it accept responsibility for any use which may be of the information, the same having been given in good faith, but without legal responsibility. This information does not give rise to any warranties of any kind, expressed or implied, including fitness for purpose and non-infringement of intellectual property. The technical information presented comprises typical data and should not be taken as representing a specification. Omya reserves the right to change any of the data without notice.

Omya International AG, Baslerstrasse 42, CH-4665 Oftringen, email: info.cosmetics@omya.com

MOISTURIZING PEARL BI-SERUM

CB2302.SP.V01



OVERVIEW

A relipidizing and moisturizing serum with thousands of micro-droplets. The lightness of the serum is combined with the sensorial comfort of the oil.

Phase	Product	INCI	Nat. O. I	% w/w
A	Purified Water	Aqua (Water)	1	58,25
	Sodium Levulinate (and) Sodium Anisate	Sodium Levulinate (and) Sodium Anisate	1	1,00
B	Greendiol® GS Caltex, Switzerland	2,3-Butanediol	1	11,00
	Xanthan Gum	Xanthan Gum	1	0,05
	Sodium Hyaluronate Cosmetic Grade Shandong Topscience Biotech CO., LTD.	Sodium Hyaluronate	1	0,20
C	Sodium Chloride	Sodium Chloride	1	3,00
D	Fragrance	Parfum/Fragrance	1	0,50
E	Caprylic/Capric Triglyceride	Caprylic/Capric Triglyceride	1	20,00
	U-Ferment®Oil Red Zoe Bio INC.	Candida Bombicola/Glucose/Methyl Rapeseedate Ferment (and) Oryza Sativa (Rice) Germ Oil (and) Gardenia Jasminoides Fruit Extract (and) Schisandra Chinensis Fruit Extract (and) Lithospermum Erythrorhizon Root Extract (and) Curcuma Longa (Turmeric) Root Extract	1	6,00
				100.00



PROCESS

Prepare phase A.

Once homogeneous, add the premix B under propeller.

Add phase C under propeller for at least 15 minutes.

Adjust the pH to 5.50 ± 0.10 with the phase D.

Add premix E under propeller.

Discover our Formulation Guide 2023/24

www.eurocosmetics-mag.com

LE SORBET

LE SORBET transforms facial cleansing with a skin-friendly, radiance-revealing formula.

CB2317.CF.V3



OVERVIEW

This "Radiance Cleansing Whipped Cream" deeply cleanses and purifies the skin. Its passion fruit seed particles, concentrated in an airy and creamy texture, release their exfoliating power for a unique skin care sensoriality. On contact with water, its generous and enveloping texture turns into a milk to gently exfoliate dead cells and impurities such as pollution particles, dust, sweat or excess sebum. Skin is clean, soft, luminous and radiantly fresh.

LE SORBET combines the power of several active ingredients to cleanse the skin while promoting a moisturizing and fortifying action.

- Vitamin B3 stimulates collagen synthesis and improves the skin's barrier function. It reduces pigmentation, limits hyperpigmentation, regulates sebaceous lipids and stimulates blood microcirculation for a radiant complexion.
- Pro-Vitamin B5 stimulates healing, reduces inflammation and promotes skin hydration.
- Passion fruit seed powder (*Passiflora edulis*) deeply cleanses pores and accelerates the cell renewal process.

Phase	Product	INCI	Nat. O. I	% w/w
A	Glycerine	Glycerine	1	16.50
	Greendiol® ¹	2,3-Butanediol	1	10.00
	Casid® HSA ²	12-Hydroxystearid Acid (and) Stearic Acid	0.99	14.00
	Cetyl Alcohol	Cetyl Alcohol	1	1.00
	Distearyl Lauroyl Glutamate	Distearyl Lauroyl Glutamate	1	3.50
	Amin LG NA ³	Sodium Lauroyl Glutamate	1	13.00
	TC-CAB 97 RSPO MB ³	Cocamidopropyl Betaine	0.6	4.00
B	Purified Water	Aqua (Water)	1	20.14
	Sodium Hydroxide (20%)	Aqua (Water) (and) Sodium Hydroxide	0.8	3.50
	D&C Yellow No.10	Aqua (Water) (and) CI 47005	0.99	3.18
	D&C Orange No.4	Aqua (Water) (and) CI 15510	0.99	0.58
C	Purified Water	Aqua (Water)	1	7.40
	Niacinamide ⁴	Niacinamide	0.66	0.30
	D-Panthenol 75% / Dexpanthenol 75% ⁵	Panthenol (and) Aqua (Water) (and) Citric Acid	0	1.00
D	Caprylyl Glycol (and) Propanediol (and) Glyceryl Caprylate	Caprylyl Glycol (and) Propanediol (and) Glyceryl Caprylate	1	1.00
	Fragrance	Parfum/Fragrance	1	0.30
E	Passion Fruit Seed Exfoliant ⁶	Passiflora Edulis Seed Powder	0	0.60
				100.00

Suppliers: 1 GS Caltex, Switzerland, 2 Aurorium Holdings L.L.C., 3 Guangzhou Tinci Materials Technology CO., LTD., 4 Jubilant Ingrevia LTD., 5 Xinfra Pharmaceutical CO., LTD., 6 Green Andina Colombia Ltda.



PROCESS

Heat phases A and B to 85°C with stirring.

Once homogeneous, emulsify B in A with vigorous stirring (1200rpm).

Cool to 45°C and add phases C and D.

If necessary, adjust pH to between 6.00 and 6.20.

SULFUR FOAMING CLEANSER

CB2005.CM.V11



OVERVIEW

Rich, creamy cleansing balm. Whipped texture that turns into a milk for quick and easy rinsing. Enriched with active sulfur, it fights acne, rosacea, seborrheic dermatitis, dandruff and pityriasis versicolor.

Phase	Product	INCI	Nat. O. I	% w/w
A	Glycerine	Glycerine	1	20.00
	Greendiol® ¹	2,3-Butanediol	1	10.00
	Casid® HSA ²	Hydroxystearic Acid	0.99	12.00
	Cetyl Alcohol	Cetyl Alcohol	1	1.00
	Distearyl Lauroyl Glutamate (and) Stearyl Alcohol	Distearyl Lauroyl Glutamate (and) Stearyl Alcohol	1	2.50
	Dermol™ SLLC-L ³	Sodium Lauroyl Lactylate	1	5.00
	Sodium Lauroyl Sarcosinate	Sodium Lauroyl Sarcosinate	0.59	8.00
	TC-CAB 97 RSPO MB ⁴	Cocamidopropyl Betaine	0.55	2.00
B	Purified Water	Aqua/Water	1	31.40
	Sulfidal™ Colloidal Sulfur Cosmetic Grade ²	Colloidal Sulfur	0	4.00
	Sodium Hydroxide 20%	Aqua (and) Sodium Hydroxide	0.8	3.00
C	Caprylyl Glycol (and) Propanediol (and) Glyceryl Caprylate	Caprylyl Glycol (and) Propanediol (and) Glyceryl Caprylate	1	1.00
	Fragrance	Parfum/Fragrance	1	0.10
				100.00

Suppliers: 1 GS Caltex, Switzerland, 2 Aurorium Holdings L.L.C., 3 Alzo International INC., 4 Guangzhou Tinci Materials Technology CO., LTD.,



PROCESS

With stirring, heat phase A to 85 ° C.
During this time bring phase B to 85 ° C.
Once phase A is homogeneous, make emulsion B in A.
Cool to 45 ° C add phase C.
Adjust the pH between 6.0 and 6.2.

Discover our Formulation Guide 2023/24

www.eurocosmetics-mag.com

Transforming Face Scrub

Skin Care

PC0969



OVERVIEW

Free flowing lightweight powder containing chemical exfoliator TEGO® Renewha Mandelic Acid and physical exfoliator Sorbosil™ BFG 10 to leave the skin feeling soft and smooth. Directions for use: Wet face and then add a small amount onto wet hands and massage together to see the powder turn to rich foam bubbles apply the foam generously over face massaging well to fully exfoliate the skin.

Phase	Product	INCI	Function	% w/w
A	Bentonite	Bentonite	Filler	3.00
	Corn Starch	Corn Starch	Mattifying	12.50
	dermosoft® anisate ²	Sodium Anisate	Preservative	0.50
	Erylite® F8030 fine ³	Erythritol	Humectant	7.00
	Lathanol LAL Coarse M ⁴	Sodium Lauryl Sulfoacetate	Surfactant	5.00
	Sorbosil™ BFG 10 ⁵	Hydrated Silica	Exfoliator	3.00
	Speswhite China Clay	Kaolin	Filler	22.00
	Surfacare® L95 ¹	Sodium Lauroyl Sarcosinate	Surfactant	Q.S.
	TEGO® Cosmo C 250 ²	1-Methylhydantoin-2-Imide	Brightner	2.00
	TEGO® RenewHA Mandelic ²	Mandelic Acid	Exfoliator	5.00

Suppliers: 1 Surfachem, 2 Evonik, 3 Jungbunzlauer, 4 Stepan, 5 PQ Corporation



PROCESS

In a beaker add all powders in order, Surfacare L95, Lathanol LAL Coarse, Speswhite China Clay, Bentonite, Erylite F8030 Fine, Tego Cosmo C250, Tego Renewha Mandelic, Cornflour, Dermosoft AnisateEco, Sorbosil BFG 10 and stir until homogenous.

(If powder contains clumps then use blender or alike to grind into a fine powder)

Disclaimer

All quantities unless otherwise shown are stated as percentage weight for weight.

Endeavours have been made to ensure that the information given is reliable, but notwithstanding this, and except for those obligations and liabilities that cannot be excluded by operation of law, neither Surfachem Group Ltd nor any of its subsidiary or associated companies assume any obligation or liability arising from the information given, the recommendations made or the use of their respective products. Since the conditions of handling and use are beyond our control, we do not guarantee any results, and we are not liable for any damage incurred by following these suggestions. Product trials, fullscale testing and end product performance are the responsibility of the user. The customer assumes all risk and liability for any testing, use or handling of any material beyond Surfachem's direct control. You are referred to the standard terms and conditions of the supplying company which apply. Certain applications may have the benefit of patent registration and you are therefore recommended in your own interest to take appropriate steps to avoid infringement of such. SURFAC, SURFACARE and SURQUEST are registered trademarks to Surfachem Group Ltd. Material sold under the Surfachem Group Ltd trademarks are manufactured by 3rd party suppliers.

Coco Body Cream

Natural-derived

PC1168B



OVERVIEW

This body cream showcases the silicone-like properties of Silsense Bio 5 Emollient by Lubrizol, a naturally-derived, biodegradable, and highly pure emollient. Directions for use: Apply as much as is required, massage well into the skin until fully absorbed. For best results, apply after showering

Phase	Product	INCI	Function	% w/w
O	Surfac MCTG	Caprylic/capric Triglyceride	Emollient	8.00
	Mango Butter	Mangifera Indica (Mango) Seed Butter	Emollient	6.00
	Surfacare ARC 165	Glyceryl Stearate; PEG-100 Stearate	Emulsifier	6.00
	Cocoa Butter	Theobroma Cacao (Cocoa) Seed Butter	Moisturising	5.00
	Cetyl Alcohol	Cetyl Alcohol	Stabiliser	4.00
	Sweet Almond Oil	Prunus Amygdalus Dulcis (Sweet Almond) Oil	Moisturising	4.00
	Beeswax	Beeswax	Emulsifier	4.00
	Shea Butter	Butyrospermum Parkii (Shea) Butter	Moisturising	4.00
	Silsense Bio 5 Emollient	C9-12 Alkane	Emollient	3.00
	Dermofeel Tocobalance	Tocoperol (and) Helianthus Annuus (Sunflower) Seed Oil	Antioxidant	0.10
	Carnauba Wax	Copernicia Cerifera (Carnauba) Wax	Film Forming	0.10
	Oramix CG110	Caprylyl/Capryl Glucoside	Solubiliser	0.10
W1	Water	Aqua	Solvent	45.79
W2	Surfac G995V	Glycerin	Humectant	8.00
W3	Dermofeel PA-12	Sodium Phytate	Chelating Agent	0.10
W4	Hyacare 50	Sodium Hyaluronate	Skin Feel	0.10
W5	Dermosoft 688 ECO	p-Anisic Acid	Preservative	0.40
W6	Dermosoft GMCY MB	Glyceryl Caprylate	Preservative	0.70
W7	Aloe Vera 1:1	Aloe Barbadensis Leaf Juice	Skin Feel	0.10
W7	Xanthan Gum FFCSP-PC	Xanthan Gum	Gelling agent	0.20
END	20% Sodium Hydroxide Solution	Sodium Hydroxide	pH adjust	0.31

PROCESS



1. To the main beaker add the required amount of DI Water. To this, add the rest of the water phase in order given above, with stirring. Heat to 80°C.
2. Mix the oil phase above. Heat with stirring to 80°C.
3. Once at temperature, add the oils to the water phase and homogenise for 1 minute until a smooth white cream forms.
4. Allow to cool with stirring.
5. Once below 35°C adjust the pH using 20% Sodium Hydroxide solution.

PROPERTIES



Appearance: Off-white thick cream
pH 6.15

Viscosity (20°C): 38,400 TSP 2, 3 RPM

REFRESHING FRUIT SMOOTHIE NATURAL HAIR CONDITIONER

Hair Care

CH0168



OVERVIEW

Give your hair and scalp a real treat with this, **COSMOS suitable**, natural conditioner that will leave hair soft and smooth all day long! Vegan suitable* **KeraMatch™ V** imparts strengthening benefits upon the hair fibre to improve the overall condition of damaged hair, whilst Crodaron's **Phytolea™ Camellia** helps to nourish the scalp and provide hydration, whilst also protecting it from external aggressions and pollutions. **Aloe Vera Extract EC** also helps to treat the scalp with its soothing properties and Iberchem's **35.39716 Fruit Smoothie Ecocert** zingy fruit fragrance is sure to uplift the senses for a good mood vibe!

Phase	Ingredient/INCI Name	Function	% w/w
A	Water Deionised (Aqua)	-	To 100
	Glycerin ⁴	Humectant	3.00
	Genusisco Carrageenan CG-131 (Carrageenan) ⁵	Rheology Modifier	0.50
	Sodium Benzoate ⁶	Preservative	0.30
	Potassium Sorbate ⁶	Preservative	0.20
B	SP Cithrol™ GMS 40 SE MBAL (Glyceryl Stearate SE) ¹	Emulsifier	5.00
	Cithrol™ GMM (Glyceryl Myristate) ¹	Structure	5.00
	Crodamol™ CP (Cetyl Palmitate) ¹	Emollient	5.00
	SP Crodacol™ CS90 MBAL (Cetearyl Alcohol) ¹	Structure	5.00
	Phytolea™ Camellia (Camellia Oleifera Seed Oil) ²	Emollient	5.00
	SP Crodacol C90 MBAL (Cetyl Alcohol) ¹	Structure	3.00
	Seatons Shea Nut Butter™ (Butyrospermum Parkii (Shea) Butter) ¹	Emollient	3.00
C	KeraMatch™ V (Aqua (and) Hydrolyzed Pea Protein (and) Hydrolyzed Vegetable Protein) ¹	Hair Strength	4.44
	Aloe Vera Extract EC (Water (and) Aloe Barbadensis Leaf Extract) ²	Botanical	3.00
	35.39716 Fruit Smoothie Extract (Parfum) ³	Fragrance	1.00
	10% Citric Acid	pH adjuster	To pH 5.0-5.5

Suppliers: **1 Croda**, **2 Crodaron**, **3 Iberchem**, 4 Cargill, 5 CP Celco 6 VWR

PROCESS

To make part A, combine water, glycerin and preservatives with stirring until preservative have dissolved. Add Carrageenan gum with stirring and homogenise at 10,000rpm for 1min/100g. Combine Part B and heat to 70°C. Heat Part A to 70°C and add Part B to Part A with stirring. Homogenise for 10,000rpm for 1min/100g. Stir to 40°C and then add Part C ingredients individually. Adjust pH to 5.0-5.5

PROPERTIES

Appearance: Off white emulsion pH: 5.33 ± 0.5; Viscosity: 28800cP± 10% (Brookfield DV2T, Spindle 6, 10rpm, 1 min).

Stability: months at 4, 25, 40, 45, and 1 month at 50°C and 7 x -10 °C/+40 °C 24 hour freeze-thaw cycle.

Genusisco is a registered trademark of CP Celco

This formulation was developed in Europe. Contact your local sales representative with enquiries as ingredient availability can vary by region.

Non-warranty The information in this publication is believed to be accurate and is given in good faith, but no representation or warranty as to its completeness or accuracy is made. Suggestions for uses or applications are only opinions. Users are responsible for determining the suitability of these products for their own particular purpose. No representation or warranty, expressed or implied, is made with respect to information or products including, without limitation, warranties of merchantability, fitness for a particular purpose, non-infringement of any third party patent or other intellectual property rights including, without limit, copyright, trademark and designs. Any trademarks identified herein, unless otherwise noted, are trademarks of the Croda group of companies.

Our terms and conditions found at www.crodapersonalcare.com/tandc apply.

©2021 Croda International Plc

Hair Growth Re-Balancing Gel

Skinimalism natural formulation – Emulsifier free –
Incredibly light texture

2302A-HGR



OVERVIEW

A regular dose of this fabulous serum on your scalp guarantees healthy, silky and hydrated hair, delivering the magic of Natura-Tec SeaRenew™, our microalgae active that promotes hair growth and strength.

This light as feather gel texture is obtained thanks to our new Plantsil Xlite and our Abysoft that helps nourish and protect your hair. This dreamy leave-in hair ritual reconnects your senses from the moment you take it in hand and offers an intense feeling of well-being and freshness for your scalp and your mind during the massage.

Phase	Ingredient	INCI	Function	% w/w
A	Deionized Water	Aqua (Water)	Solvent	73.60
	Satiaxane CX91 1 (ACEF)	Xanthan Gum	Rheology modifier	0.15
	Amaze XT (Akzonobel)	Dehydroxanthan Gum	Rheology modifier	0.25
	Natura-Tec Rice Starch	Oryza Sativa (Rice) Storch	Rheology modifier	5.00
B	Natura-Tec Plantsil™ Xlite	Isoamyl Laurate {and} Hydrogenated Ethylhexyl Oliviate	UltraLight alternative to silicone, degreasing agent	1.50
	Natura-Tec Abysoft™	Crambe Abyssinica Seed Oil Phytosterol Esters	Hair protection active	10.00
	Natura-Tec SeaRenew™	Pouteria Sapota seed Oil {and} Nannochloropsis Oceanica Extract	Hair growth & strength active	3.00
C	Ethanol	Alcohol Denat.	Anti tacking agent	5.00
	Cosmi I 9804B Gold/ Red Special Flash (KUNCAI)	Titanium Dioxide {and} Tin dioxide {and} Calcium Sodium Borosilicate	Glitters	0.20
	Natura-Tec Rice Starch	Oryza Sativa (Rice) Storch	Sensorial agent	0.50
	Geogard ECT	Benzyl Alcohol (and) Salicylic Acid (and) Glycerin (and) Sorbic Acid	Preservative	0.80
	Sodium Hydroxide	Sodium Hydroxide	pH adjuster	Qs

PROCESS

Add first Amaze XT at room temperature and allows it to hydrate under slow agitation. Then, add Satiaxane under slow agitation. Once the mixture is homogeneous, add Natura-Tec Rice Starch and heat to 70 °C. Let stirring for few minutes until Rice Starch jellified. Heat separately phase A and B at 70°C. At temperature, add phase B to A whilst stirring moderately. Homogenize using Ultra Turrax (2 min at 6000 rpm). Allow to cool down whilst stirring moderately. Add phase C below 40°C. Adjust pH.

PROPERTIES

Appearance: Bright, smooth & sparkling gel
Viscosity (20°): 15200 mPa.s (LV3;5 rpm), pH=4,4.

WAY OF USE

Get a small amount of product onto your hand and apply it on the hair scalp and length.

Pink Curly Hair Jelly

PC1166B



OVERVIEW

A fun hair styling jelly thats easy to work with and offers an ultra-strong hold for all your styling needs. Directions for use: Using a pea sized amount, massage through hair with fingers and style as desired.

Phase	Product	INCI	Function	% w/w
A	Water	Aqua	Solvent	83.09
	Carbopol Clear	Carbomer	Texturiser	0.90
	Fixate Freestyle	Acrylates crosspolymer-3	Rheology modifier	4.00
	Tego Cosmo C 100	Creatine	Protectant	1.00
	RED 33 0.5% Solution	CI17200	Dye	0.01
	Verstatil TBG MB	Triethyl citrate (and) glyceryl caprylate (and) benzoic acid	Preservative	1.00
B	AMP Ultra PC2000	Aminomethyl propanol	pH adjuster	1.60
C	Water	Aqua	Solvent	1.00
	Glycerin	Glycerin	Humectant	1.50
	Algapur HSHO Algae Oil	Triolein	Emollient	5.00
	Givaudan Sweet Rhubarb	Parfum	Perfume	0.10
	Tego Solve 61 MB	Polyglyceryl-6 Caprylate (and) Polyglyceryl-3 Cocoate (and) Polyglyceryl-4 Caprate (and) Polyglyceryl-6 Ricinoleate	Solubiliser	0.80

PROCESS



1. In part A, disperse Carbopol Clear into water with vigorous agitation. Mix until uniform.
2. Add Fixate Freestyle polymer, mix until homogenous.
3. Add Tego Cosmo C100, dye, and preservative and mix until homogenous.
4. Neutralise Part A using AMP Ultra PC 2000 with mixing. Ensure pH is 6.7–7.5. Mix until uniform.
5. Mix Part C ingredients separately, mix until clear and add to main beaker. Mix until homogenous.

PROPERTIES



Appearance: pink viscous jelly
pH 6.70–7.50

Viscosity: 20,000 – 35,000 Tsp 3, 10 rpm

DAILY PROTECTION MINERAL SUNSCREEN SPF 40 WITH 1/3 UVA

Sun Care; mineral only sunscreen
BR0158



OVERVIEW

This inorganic sunscreen uses the right combination of **Solaveil™ Clarus** and **Solaveil™ MicNo** that delivers maximum transparency with great sensorial for the consumer – light, pleasant feel and good spreadability in the skin. For the consumers who wants mineral sun protection every day!

Phase	Ingredient / INCI Name	Functionality	% w/w
A	Water Deionised (Aqua)	–	To 100
	Glycerin	Humectant	1.50
	Magnesium sulfate heptahydrate	Salting out	0.70
B	Solaveil MZP8 (Zinc Oxide (and) Stearic Acid) ¹	Inorganic Broad UV filter	19.00
C	Crodamol™ GTCC (Caprylic/Capric Triglyceride) ¹	Emollient	5.00
	Crodamol IPIS (Isopropyl Isostearate) ¹	Emollient	15.00
	Cithrol PG32IS (Polyglyceryl-3 Diisostearate) ¹	Emulsifier	3.00
	Polyhydroxystearic Acid	Dispersant	1.50
D	Cithrol DPHS (PEG 30 Dipolyhydroxystearate) ¹	Emulsifier	0.75
	Bentone Gel TNV (C12-15 Alkyl Benzoate (and) Stearalkonium Hectorite (and) Propylene Carbonate) ³	Rheology modifier	0.75
E	Solaveil CT-100 (C12-15 Alkyl Benzoate (and) Titanium Dioxide (and) Aluminum Stearate (and) Polyhydroxystearic Acid (and) Alumina) ¹	Inorganic UVB filter	10.00
	Solaveil CT-200 (Titanium Dioxide (and) Isohexadecane (and) Triethylhexanoin (and) Aluminium Stearate (and) Polyhydroxystearic Acid (and) Alumina) ¹	Inorganic UVB filter	32.00
	Lexgard Natural MB (Glyceryl Caprylate (and) Glyceryl Undecylenate) ²	Preservative	1.00
F	Silica	Sensory modifier	1.00
	Aluminum Starch Octenylsuccinate	Sensory modifier	2.00

Suppliers: **1 Croda**, **2 Inolex**, **3 Elementis**



PROCESS

- Auxiliary beaker 1: Combine Part A (Aqueous phase) and stir until homogenous. Heat until 75–80°C.
- Main beaker: Add Part B (Solaveil MZP8).
- Auxiliary beaker 2: Combine Part C (Emollients, Dispersant, Cithrol PG32IS), with stirring.
- Bench Process: Add Part C to Part B, with the help of a spatula to run down the beaker wall, in the initial moments of the addition, to avoid the cloud of dust. After all addition, stir for 10 min, until total wetting of Solaveil Powder.
- Manufacturing process: Add Part B to Part C (main reactor).
- Part B/C: Homogenize using an Ultra-Turrax at 8.500–10.000rpm during 20–30 min or until total dispersion of Solaveil Powder.
 - Adjust the maximum speed of homogenization (8.500 – 10.000rpm), so that there is no loss of bulk outside the beaker.
 - Dispersion test: 1 drop of this phase on two slides before proceeding, to ensure full dispersion of the powder.
 - Safety: Warming is expected due to the high shear rate, so we recommend placing the beaker in a bowl of water (25°C).
- Return to stirrer and add Part D (Cithrol DPHS and rheology modifier) to Part B/C, stir until get homogeneous. Heat until 75–80°C.
- At 60°C add Part E (Solaveil Dispersions and Preservative) to Part B/C/D, with stirring. Continue heating until 75–80°C to emulsification phase.
- At 75–80°C, add Part A (Aqueous phase) to Part B/C/D/E (Oil Phase) slowly with high stirring. Homogenize using an Ultra-Turrax at 10.000rpm for 1 minutes per 100g.
- Start cooling until 25°C with stirring. At 25–30°C add Part F (Sensory modifiers) (Obs: Add below 40°C (Starch) to ensure sensory modifier functionality). Homogenize with Ultra-Turrax at 4.000rpm for 2 min, until get homogeneous system.

DAILY PROTECTION MINERAL SUNSCREEN SPF 40 WITH 1/3 UVA

Sun Care; mineral only sunscreen
BR0158



TECHNICAL INFORMATION

UV Filter: To achieve High Performance with Maximum Transparency and Cost-effectiveness: Solaveil Clarus (TiO₂ nano-sized particle) and Solaveil Micno (ZnO micron-sized particle with a patented platelet-shaped).

Solaveil Clarus: Solaveil CT-200 and Solaveil CT-100 (TiO₂ – UVB)

- High Transparency: has a tightly controlled particle size distribution providing true transparency on skin.
- Dispersion: for ease of handling. Isohexadecane (CT-200) and C12-15 Alkyl benzoate (CT-100) carriers fluid that offers a light, non-greasy feel and improve the spreadability of the formula.
- Combination to obtain the best relationship between performance, cost effectiveness, associated with the sensorial, corroborating for the best spreadability of the final formula.

Solaveil Micno: Solaveil MZP8 (ZnO – Broad Spectrum)

- High Transparency: Based on patented, platelet-shaped structures results in less scattering/reflection to the surface and therefore high transparency.
- Powder: Solaveil MZP8 (ZnO Stearic Acid coated (hydrophobic coating)) – which facilitates ease of incorporation into the oil phase of the emulsion. Powder format provides greater formulation flexibility.

Emollients: Crodamol GTCC and Crodamol IPIS: Effective wetting agents for MZP8. Have light sensorial and due to their low viscosity they offer good spreadability and aesthetic for the formula. High Natural % (ISO16128) GTCC 100% and IPIS 84%.

Emulsifiers: Association of Cithrol PG32IS and Cithrol DPHS is a highly efficient W/O emulsifier system to give good stability for sunscreen formulas besides this type of emulsion are a very efficient vehicle for sunscreen actives, and is particularly suitable for oil-based dispersions of TiO₂ and ZnO.

Cithrol PG32IS is a good dispersing medium for inorganic pigments, as its liquid form is compatible for cold process. Is 100% Natural (ISO 16128).

Cithrol DPHS has an excellent stabilisation due to high molecular weight, and large polymeric oil- and water phase anchors. Easy and reproducible emulsion processing, including semi-cold process.



PROPERTIES

Appearance: Greyish Lotion; pH: N.A.;

Viscosity: 4319 cP (Spindle 63, 6rpm, 1min, room temperature).

Stability: 3 months at 5 °C, 25 °C, 45 °C and 1 month at 50°C and 0°C/+50°C 12 hour freeze-thaw cycle.

In vivo SPF: 44,2 (ISO 24444:2019, 3 subjects, Allergisa BR).

In vivo UVA: 12,5 (ISO 24442: 2011, 3 subjects, Allergisa BR).

CW: 373nm (ISO 24443: 2012, Allergisa BR).

This formulation was developed in Latin America. Contact your local sales representative with enquiries as ingredient availability can vary by region.

Non-warranty

The information in this publication is believed to be accurate and is given in good faith, but no representation or warranty as to its completeness or accuracy is made. Suggestions for uses or applications are only opinions. Users are responsible for determining the suitability of these products for their own particular purpose. No representation or warranty, expressed or implied, is made with respect to information or products including, without limitation, warranties of merchantability, fitness for a particular purpose, non-infringement of any third party patent or other intellectual property rights including, without limit, copyright, trademark and designs. Any trademarks identified herein, unless otherwise noted, are trademarks of the Croda group of companies.

©2020 Croda International Plc

SUN OIL

SPF 15

CB2240.SO.V1



OVERVIEW

Low SPF sun oil. Preserves your skin against dehydration and helps protect your face and body from the sun's rays and premature skin photoaging.

Phase	Product	INCI	Nat. O. I	% w/w
A	Methylheptyl Isostearate	Methylheptyl Isostearate	0.99	35.80
	Isoamyl Laurate	Isoamyl Laurate	1	30.00
	Crystal® O ¹	Ricinus Communis (Castor) Seed Oil	1	5.00
	CHEM-1789 ²	Butyl Methoxydibenzoylmethane	0	3.00
B	Elefac™ I-205 ³	Octyldodecyl Neopentanoate	0	4.00
	OMCX ²	Ethylhexyl Methoxycinnamate	0	7.50
C	Polyglyceryl-2-Triisostearate	Polyglyceryl-2-Triisostearate	1	4.00
	CHEM HMS ²	Homosalate	0	10.00
D	Tocopherol (and) Helianthus Annuus Seed Oil	Tocopherol (and) Helianthus Annuus Seed Oil	1	0.20
E	Fragrance	Parfum/Fragrance	1	0.50
				100.00

Suppliers: 1 Aurorium Holdings L.L.C., 2 Chemspec Chemicals Limited, 3 Guangzhou Tinci Materials Technology CO., LTD.



PROCESS

Disperse and heat phase A under stirring to 40°C until it is clear and homogeneous.

Then turn off the heating and, under stirring, add the pre-dispersed phase B.

Then add phases C, D and E.

Discover our Formulation Guide 2023/24

www.eurocosmetics-mag.com

Toothpaste

Oral Care

40% Omyacare® S70-KP



OVERVIEW

Omyacare® S70-KP for abrasivity & cleaning performance
Charcoal beads Cosmospheres for whitening properties

Phase	Product	INCI	% w/w
A	Sorbitol 70%	Sorbitol	20.00
	Zemea® Propanediol ²	Propanediol	5.00
	GLE Organic Glycerin ²	Glycerin	10.00
	Aqua dem.	Aqua (Water)	add. 100
	Cekol® 2000 ⁴	Cellulose Gum	0.80
	Evicare® Magnolia ²	Magnolia Officinalis Bark Extract	0.10
	Erylite® Stevia 400 ⁶	Erythritol (and) Stevia Rebaudiana Extract	0.10
	SMFP Wendeng JinYE ³	Sodium Monofluorophosphate	1.10
B	Omyacare® S70-KP ¹	Calcium Carbonate	40.00
	Sorbosil TC15 ⁵	Hydrated Silica	4.80
C	Galaxy 796G ³	Sodium Lauryl Sulfate	3.00
	Cosmospheres Activated ¹	Mannitol (and) Carbon Black (and) Microcrystalline	2.00
	Carbon Beads 2S	Cellulose	
	Mint Aroma ³	Aroma	0.80
			100.00

Suppliers: **1 Omya International AG, Switzerland, 2 OmyaKinetik, USA, 3 Omya GmbH, Germany, 4 CP Kelco, Germany, 5 PQ Corporation, UK, 6 Jungbunzlauer, Germany**



PROCESS

1. Phase A: Into a beaker combine Cekol® 2000 and Glycerin and mix under strong agitation. Add the rest of ingredients except water and mix. Add water and stir to make a homogeneous texture.
2. Add part B step by step to part A under strong agitation and homogenize.
3. Stir slowly and cool down to room temperature.
4. Add Galaxy, then mint aroma under slow agitation, optionally under vacuum.
5. Finally add Cosmosphere beads also under slow agitation.



PROPERTIES

Physical Data: pH 8.30 (25%, RT)
Viscosity –

Stability tested:
3 months: 5°C, room temperature, 40°C
6 & 12 months: room temperature

Omya has taken every possible care to ensure that the information herein is correct in all aspects. However, Omya cannot be held responsible for any errors or omissions which may be found herein, nor will it accept responsibility for any use which may be of the information, the same having been given in good faith, but without legal responsibility. This information does not give rise to any warranties of any kind, expressed or implied, including fitness for purpose and non-infringement of intellectual property. The technical information presented comprises typical data and should not be taken as representing a specification. Omya reserves the right to change any of the data without notice.

Omya International AG, Baslerstrasse 42, CH-4665 Oftringen, email: info.cosmetics@omya.com

Toothtabs

Oral Care

Omyanutra® 300 Flash,
Omyacare® S95-OG & Omyadent® 100-OG



OVERVIEW

Omyanutra® 300 Flash for ultra-fast disintegration time

Omyacare® S95-OG for abrasivity & cleaning performance

Omyadent® 100-OG provides remineralization & whitening effect

Phase	Product	INCI	% w/w
A	Omyacare® S95-OG ¹	Calcium Carbonate	10.00
	Omyadent® 100-OG ¹	Hydroxyapatite (and) Calcium Carbonate	5.00
	Plantapon® ACG 50 ³	Disodium Cocoyl Glutamate	3.00
	Essential Mint Oil ⁶	Mentha Piperita Oil	2.00
B	Omyanutra® 300 Flash ¹	Calcium Carbonate (and) Hydroxyapatite (and) Sodium Croscarmellose	30.00
	Pearlitol® 100 SD ²	Mannitol	28.88
	Phoskudent® SF ⁵	Sodium Fluoride	0.32
	Compritol® 888 ATO ⁴	Glyceryl Behenate	15.00
	Vivapur® CS 130 FM ⁷	Microcrystalline Cellulose	5.00
	Erylite® Stevia 100 ⁸	Erythritol (and) Stevia Rebaudiana Extract	0.80
			100.00

Suppliers: **1 Omya International AG, Switzerland**, 2 Roquette, France, 3 Impag, Switzerland, 4 Gattefossé, Switzerland, 5 BK Giulini, Germany, 6 Hänseler AG, Switzerland, 7 JRS – J. Rettenmaier & Söhne GmbH, Germany, 8 Jungbunzlauer, Germany

PROCESS



1. Into a beaker combine Omyacare®, Omyadent®, essential oil and add Plantapon® ACG 50 using the high shear mixer from Glatt. Mix it first for 5 minutes then for 10 minutes.
2. Add phase B, except Mannitol and mix all together under agitation for 10 minutes using the Erweka Turbular mixer.
3. Blend the mixture with Mannitol and mix for 5 minutes.
4. Press the mixture on the tablet press Fette 1200i.

PROPERTIES



Physical Data: pH –

Viscosity –

Stability tested:

3 months: 5°C, room temperature, 40°C

6 & 12 months: room temperature

Omya has taken every possible care to ensure that the information herein is correct in all aspects. However, Omya cannot be held responsible for any errors or omissions which may be found herein, nor will it accept responsibility for any use which may be of the information, the same having been given in good faith, but without legal responsibility. This information does not give rise to any warranties of any kind, expressed or implied, including fitness for purpose and non-infringement of intellectual property. The technical information presented comprises typical data and should not be taken as representing a specification. Omya reserves the right to change any of the data without notice.

Omya International AG, Baslerstrasse 42, CH-4665 Oftringen, email: info.cosmetics@omya.com

DIY Super Glowing Eye Shadow

Color Cosmetics

1901C-SGES



OVERVIEW

Let this ultra light texture glamourize your eyes with delicate sparkles or buff the glitter out beyond your lids, onto your cheekbones to highlight them. This eyeshadow brings the bling with only 6 ingredients, complying perfectly with the clean beauty philosophy.

Our ultra light multifunctional Natural BBB–Beauty Balm Base provides a sensation of unique softness at application, similar to silicone. It will stay on your eyelid with a wonderful dry after feel and without any greasy residue.

Enjoy a sparkling life with this minimalist formula.

Phase	Ingredient	INCI	Function	% w/w
A	Natural BBB – Beauty Balm Base	Hydrogenated Ethylhexyl Olivatate (and) Hydrogenated Castor Oil (and) Butyrospermum Parkii Butter (and) Tocopherol	Ultra light functional base Easy to use	52.80
	Natura-Tec Abysoft™	Crambe Abyssinica Seed Oil Phytosterol Esters	Moisturizing agent, pigment dispersion and long-lasting color	35.00
	COSMI® 8553 Flash Angwantibo OR COSMI® 19830C Green/Gold Very Flash (Kuncai Material Technology CO, LTD)	Synthetic Mica (and) Titanium Dioxide (and) Iron (III) Oxide OR Calcium Sodium Borosilicate (Glass) (and) Titanium Dioxide (and) Tin Dioxide (and) Iron (III) Oxide	Glitters	12.00
B	Natural Vitamine E	Tocopherol	Antioxidant	0.20

PROCESS



Weight phase A and heat up to 85 °C.
Once the phase A is homogeneous, add the tocopherol and mix well. Let cool under stirring.
Pour in a specific mold at 60°C.

PROPERTIES



Appearance: Sparkling soft balm.

Divine and Natural Mud for Lip & Cheek

Color Cosmetics

2301A-DNM



OVERVIEW

The perfect complement to the effortless makeup looks we all crave.

Its airy texture naturally enhances your lips by depositing an intense, sublime and light etching while bringing a touch of delicately matte and soft colour.

The combination of our Natural BBB and our Natura-Tec Plantsil Xlite (new silicone alternative) offers a surprisingly soft, velvety and non-dry texture, to be used on the finger for a touch of pleasure and to offer a unique emotional experience. Let your lips be the tender voice of your soul ! ...

Phase	Ingredient	INCI	Function	% w/w
A	Natura-Tec Plantsil™ Xlite	Isoamyl Laurate (and) Hydrogenated Ethylhexyl Olivote	Nalurool ullralight alternolive to silicone High wetting power	15.00
	Unipure White LC 981	CI 77891	Pigment	7.00
	Unipure Red LC307 I Red 7 Lake	CI 15850	Pigment	0.40
	Unipure Brown LC887	CI 77491 + CI 77499 + CI 77492	Pigment	2.80
	Unipure Yellow LC 181 (Sensient Beauty)	CI77492	Pigment	1.10
B	Natural BBB-Beauty Balm Base	Hydrogenated Ethylhexy Ollivate (and) Hydrogenated Castor Oil (and) Butyrospermum Parkii Butter (and) Tocopherol	Ready to use texturizing natural balm base	59.00
	NaturaVelvet™ Sweet Almond	Prunus Amygdalus Dulcis Oil (and) Hydrogenated Vegetable Oil (and) Butyrospermum Parkii Butter (and) Tocopherol	Emollient	7.20
	Natura-Tec Carnauba Wax T1	Copernicia Cerifera Cera	Thickener	5.00
C	Natural Vitamin E	Tocopherol	Antioxidant	0.50
	Natura-Tec Rice Starch	Oryza Sativa (Rice) Starch	Texturizing agent	2.00

PROCESS



At room temperature, weigh phase A and mix gently. Once the phase A is homogeneous, add phase B and heat up to 80°C. Add the phase C under 60°C and mix well. Let cool down under stirring and pour in a specific mold at 45°C.

PROPERTIES



Appearance: Colored and matte foamy paste

WAY OF USE



Get a small amount of product onto your finger and apply it on your lip and cheek. Finish with a brush.

ALPIN MOISTURIZING EYE PATCHES

Color Cosmetics
RD2152.MA.V6



OVERVIEW

Shimmering hydrogel eye patches. Black colored thanks to the peat extract that provides a radiant, moisturizing and firming effect. Soft, smooth and ultra-fresh texture.

Phase	Product	INCI	Nat. O. I	% w/w
A	Greendiol ¹	2.3-Butanediol	1	5,00
	Xanthan Gum	Xanthan Gum	1	0,50
	Konjac Gum ²	Amorphophallus Konjac Root Extract	1	0,40
	Purified Water	Aqua/Water	1	78,74
B	Calcium Titanium Borosilicate (ou Glass) (and) Tin Oxide (And) Titanium Dioxide	Calcium Titanium Borosilicate (ou Glass) (and) Tin Oxide (And) Titanium Dioxide	1	0,06
	Calcium Titanium Borosilicate (ou Glass) (and) Tin Oxide (And) Titanium Dioxide	Calcium Titanium Borosilicate (ou Glass) (and) Tin Oxide (And) Titanium Dioxide	1	0,06
	Activonol-5N (Natural) ³	Pentylene Glycol	1	5,00
C	Levulinic Acid (and) Glycerin (and) Sodium Levulinate (and) Aqua	Levulinic Acid (and) Glycerin (and) Sodium Levulinate (and) Aqua	1	1,00
	Activonol-3 RSPO MB ³	Propanediol	1	5,00
	Sodium Hyaluronate Cosmetic Grade Low Molecular Weight ⁴	Sodium Hyaluronate	1	0,20
	Alpin Heilmoor Extract™ (AHE) ⁵	Peat Extract	1	3,00
D	Sodium Hydroxyde (20%)	Aqua (Water) (and) Sodium Hydroxyde	0,8	0,79
E	Fragrance	Parfum/Fragrance	1	0,25
				100,00
Suppliers: 1 GS Caltex, 2 Hubei Yizhi Konjac Biotechnology CO., LTD., 3 Activon CO., LTD., 4 Shandong Topscience Biotech CO., LTD., 5 Premium Organic GmbH				



PROCESS

Prepare premix A.
Heat phase A to 75°C.
Add premix A to phase B while stirring with a propeller.
Prepare premix C and add to A+B.
Adjust the pH to between 5.0 and 5.5.
Heat to 80°C and add D with very low stirring.
Add phase E.



SUPPLIER'S GUIDE

Market Place for Business

Aerosol Mixing Balls



SiLibeads®
glass balls for aerosol sprays

SIGMUND LINDNER GmbH
Phone: (+49) 92 77-99 10- Fax: (+49) 92 77-99 19
E-Mail: sili@sigmund-lindner.com
www.sili.eu

Aluminium Seals

Alu-Siegelverschlüsse Alu-Folien

- für Glas- u. Kunststoff-Behälter
- in Kleinst- u. Massenaufgabe
- in jeder Größe zu jedem Zweck

DERSCHLAG GmbH & Co. KG
Folienverarbeitung

57319 Bad Berleburg
Tel.: 0 27 51/20 27 - Fax: 0 27 51/20 25
www.derschlag.com

BALLERSTAEDT SEALING SYSTEMS

Sealing systems made in Germany

- aluminium seals
- digital packaging print
- reel material
- induction liners
- heat sealing machines
- induction sealing machines

Contact us:

+49 (0) 7222/9515-0
sales@ballerstaedt.de
www.ballerstaedt.de

Beeswax

Wachs- und Ceresin-Fabriken TH. C. TROMM GmbH

D – 50 735 Köln / Cologne
phone: +49(0)221 9745520
e-mail: info@wax-tromm.de
internet: www.wax-tromm.de



Aroma Chemicals



Joh. Vögele KG
Postfach 269
D-74345 Lauffen a.N
Tel.: +49 (0) 71339802 - 0
Fax: +49 (0) 71339802 - 60
info@voegele-lauffen.de
www.voegele-lauffen.de



Auditing/Consulting

MTC • Dr. Barth

Managementsystems & Auditing
• Trainings • Consulting

- GMP-, QM-, EM-, IFS-HPC Auditor, OHS inspect.
- Audits of suppliers, manufacturers, contractors
- Cosmetics, bulks, APIs, ingredients, packaging
- Cosmetic GMP, GMP / ICH, IFS-HPC, QM, SHE

MTC – Dr. Barth ☎ +49(0)34925-72275
Bergweg 5a ☎ +49(0)34925-72281
06905 Bad Schmiedeberg ☎ info@mtc-barth.de
Germany ☐ www.mtc-barth.de



OCI

★ ~Cosmetic Registration in China
★ ~New Cosmetic Ingredient in China

E-mail: oci.services@oci.net.cn
Tel: +86 10 68091928
24H Hotline: +86 18611397599
Web: www.oci.net.cn
Oriental Chemical Information Co., Ltd.

Chemical Supplier

CLARIANT

Clariant International Ltd
ROTHAUSSTRASSE 61
4132 MUTTENZ
SWITZERLAND

CLARIANT.COM/PERSONALCARE

Chemical Supplier

Ascot International Ltd.
Welcroft St., Stockport, Cheshire SK13DF (UK)
Email ns@ascot1.com
Web www.ascot1.com

- Anti ageing/wrinkle
- Aromatherapy & Massage oils
- Hair Care
- Insect repellent
- Natural & Organic Oils
- Skin Lightening & Tanning
- Sun & UV-Care

Ascot
INTERNATIONAL

Service
Support
Supply

(+0044)161 476 6161

Chemical Supplier

Surfachem

Delivering chemistry
for a better life

www.surfachem.com

Ingredient distribution:

- Beauty & Personal Care
- Home, Industrial & Institutional Care
- Pharmaceuticals

Locations:

Brazil | Benelux | Germany
Nordics | Poland | UK & Ireland

Ceresin/Ozokerite

Wachs- und Ceresin-Fabriken TH. C. TROMM GmbH

D – 50 735 Köln / Cologne
phone: +49(0)221 9745520
e-mail: info@wax-tromm.de
internet: www.wax-tromm.de



Contract Laboratory



BAV INSTITUT

Contract Laboratory & Analytical
Services
Hanns-Martin-Schleyer-Str. 25
D-77656 Offenburg
T +49.781.96947.0
F +49.781.96947.20
info@bav-institut.de
www.bav-institut.de

Check it out online

Contact:
claudia.oderwald@eurocosmetics.de



SUPPLIER'S GUIDE

Market Place for Business

Cosmetic Product Development

Sie suchen professionelle Kosmetikproduktentwicklung, kreativ, nach aktuellstem Wissen.
www.cpd-development.ch

Essential Oils



Joh. Vögele KG
Postfach 269
D-74345 Lauffen a.N.
Tel.: +49 (0) 71339802 - 0
Fax: +49 (0) 71339802 - 60
info@voegele-lauffen.de
www.voegele-lauffen.de



Filling Machines

pamasol
Swiss Aerosol Solutions

Aerosol Know-How
Machines for Aerosol
and Spray Systems



Pamasol Willi Mäder AG
8808 Pfäffikon SZ - Switzerland
T +41 55 417 40 40
info@pamasol.com - www.pamasol.com

Glitter Effects

The German spirit of quality since 1856

Glitter
brilliant effects for cosmetic products

SIGMUND LINDNER GmbH
www.sili.eu

Lipbalm Full Service

K.K.
COSMETICS BY KHK

Full service lipcare
Own private label
production in Germany

KHK GmbH
Innungstr. 29 • D-50354 Hürth
Tel.: +49 (0) 2233 / 71 771-25
sales@lipcare.de
www.lipcare.de

Lanolin

H. ERHARD WAGNER GMBH

Kompetenz in Naturwachs

Wollwachs pharm. & techn. • Wollwachsalkohol (auch BHT frei) • Cholesterol
Lanolin Öl • Lanolinfettsäure • Phyto-Ester • pflanzl. Konsistenzgeber • Pflanzenextrakte • Montanglycolwachs DAB
Naturwachse • Omega-3-Kapseln

www.wagnerlanolin.de

Microcrystalline Wax

Wachs- und Ceresin-Fabriken
TH. C. TROMM GmbH
D - 50 735 Köln / Cologne
phone: +49(0)221 9745520
e-mail: info@wax-tromm.de
internet: www.wax-tromm.de

Natural Waxes

SSB STROEVER SCHELLACK BREMEN

Schellack

ein nachwachsender Rohstoff

Pharma Food Kosmetik Technik

Stroeve GmbH & Co. KG
Tel 0421 38613-0
www.stroeve.de

Services



SystemKosmetik

Produktionsgesellschaft
für kosmetische
Erzeugnisse mbH

Raiffeisenstraße 2
86692 Münster am Lech
Tel. 49 8276 58490-0
info@systemkosmetik.de
www.systemkosmetik.de

Your contract manufacturer certified.competent.fair.
Your expert point of contact for all areas of cosmetics
production - full service!

Benefit from our services:

Service modules - choose as needed | 24h online portal |
Quality and environment management system | Flexibility
in development and production.

**Want to be
seen here?
In every issue
print and online.**

www.eurocosmetics-mag.com

EURO COSMETICS_{2go}

YOUR monthly NEWSLETTER

Informative · Innovative
Get Inspired!

